

NEMA Type 4

Single-Door Enclosures

Application

- ◆ Intended for indoor and outdoor use
- ◆ Protects against falling rain, splashing and hose directed water

Construction

- ◆ Enclosure and door are fabricated from code gauge steel
- ◆ All doors are 14 gauge steel
- ◆ Seams continuously welded and ground smooth
- ◆ Continuous hinged door
- ◆ Stainless steel door clamps for watertight seal
- ◆ Provision for padlocking
- ◆ Oil-resistant gasket and adhesive
- ◆ External mounting feet
- ◆ No holes or knockouts
- ◆ Data pocket
- ◆ Collar studs provided for optional back panel
- ◆ Door and body stiffeners in larger enclosures

Finish

- ◆ ANSI 61 gray polyester powder coating inside and out over phosphatized surfaces
- ◆ Optional inner panel is white powder coat

Standards

- ◆ UL 508 Type 4, Type 12, Type 13
- ◆ NEMA Type 3, Type 4, Type 12, Type 13
- ◆ IEC 60529, IP66



Modification and Options

- ◆ Enclosure height, width, and depth
- ◆ Holes and cutouts
- ◆ Louvers, filters and fans
- ◆ Windows
- ◆ Floor stand kits
- ◆ Drip shield

Enclosure Catalog Number	Body Gauge	Size HxWxD	Enclosure Catalog Number	Body Gauge	Size HxWxD
MCF-N4-241206-SD	16	24x12x6	MCF-N4-242012-SD	14	24x20x12
MCF-N4-242006-SD	16	24x20x6	MCF-N4-242412-SD	14	24x24x12
MCF-N4-242406-SD	16	24x24x6	MCF-N4-362412-SD	14	36x24x12
MCF-N4-362406-SD	14	36x24x6	MCF-N4-363612-SD	14	36x36x12
MCF-N4-241208-SD	16	24x12x8	MCF-N4-482412-SD	14	48x24x12
MCF-N4-242008-SD	14	24x20x8	MCF-N4-483612-SD	14	48x36x12
MCF-N4-242408-SD	14	24x24x8	MCF-N4-483616-SD	14	48x36x16
MCF-N4-362408-SD	14	36x24x8	MCF-N4-483624-SD	14	48x36x24



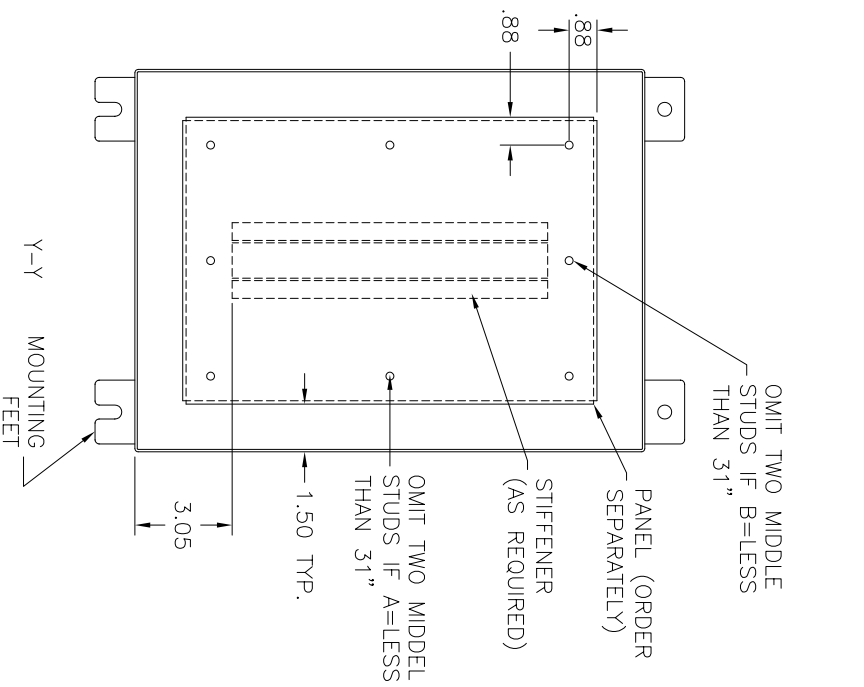
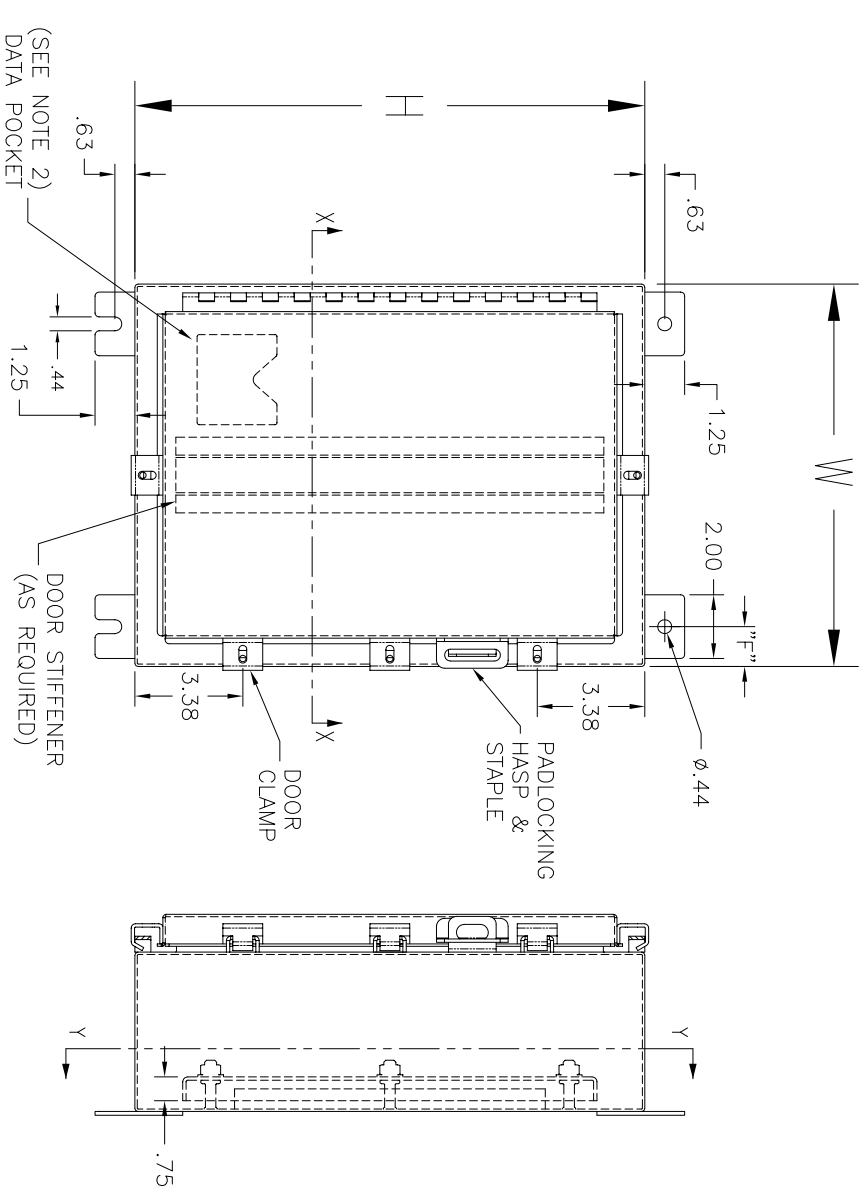
METAL CABINET AND FIXTURE COMPANY

a **Span-O-Matic, Inc.** Company

825 COLUMBIA STREET, BREA, CA 92821
 PHONE: 714-256-4700 FAX: 714-256-4401
 WWW.SPANOMATIC.COM
 WWW.METALCAB.COM

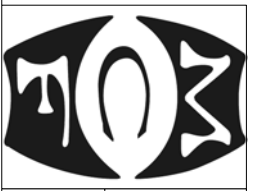
MCF-N4-SD

Type 4 Single Door Enclosure



NOTES:

- 1. PANELS ARE 12 GAUGE STEEL
- 2. SMALL DATA POCKET 6.0 X 6.0
LARGE DATA POCKET 9.0 X 9.0



METAL CABINET & FIXTURE CO.
825 COLUMBIA ST., BREA, CA 92821
(714) 256-4700

MCF-N4-SD