

NEMA Type 4X

Stainless Steel Single-Door Enclosures

Application

- ◆ Intended for indoor and outdoor use
- ◆ Protects against rain, splashing and hose directed water and resists corrosion

Construction

- ◆ Enclosure and door are fabricated from 304 stainless steel
- ◆ All doors are 14 gauge 304 stainless steel
- ◆ Seams continuously welded and ground smooth
- ◆ Continuous stainless steel hinged door
- ◆ Stainless steel door clamps for watertight seal
- ◆ Provision for padlocking
- ◆ Oil-resistant gasket and adhesive
- ◆ External mounting feet
- ◆ No holes or knockouts (see options)
- ◆ Data pocket
- ◆ Collar studs provided for mounting back panel
- ◆ Door and body stiffeners in larger enclosures

Finish

- ◆ Enclosures are unpainted with a smooth brush finish.
- ◆ Optional inner panel is white powder coat

Standards

- ◆ UL 508 Type 4x, Type 12
- ◆ NEMA Type 3, Type 4, Type 4x, Type 12, Type 13
- ◆ IEC 60529, IP66



Modification and Options

- ◆ Enclosure height, width, and depth
- ◆ Holes and cutouts
- ◆ Louvers, filters and fans
- ◆ Windows
- ◆ Floor stand kits
- ◆ Drip shield

Enclosure Catalog Number	Body Gauge	Size HxWxD	Enclosure Catalog Number	Body Gauge	Size HxWxD
MCF-N4X-241206-SD	16	24x12x6	MCF-N4X-242012-SD	14	24x20x12
MCF-N4X-242006-SD	16	24x20x6	MCF-N4X-242412-SD	14	24x24x12
MCF-N4X-242406-SD	16	24x24x6	MCF-N4X-362412-SD	14	36x24x12
MCF-N4X-362406-SD	14	36x24x6	MCF-N4X-363612-SD	14	36x36x12
MCF-N4X-241208-SD	16	24x12x8	MCF-N4X-482412-SD	14	48x24x12
MCF-N4X-242008-SD	14	24x20x8	MCF-N4X-483612-SD	14	48x36x12
MCF-N4X-242408-SD	14	24x24x8	MCF-N4X-483616-SD	14	48x36x16
MCF-N4X-362408-SD	14	36x24x8	MCF-N4X-483624-SD	14	48x36x24



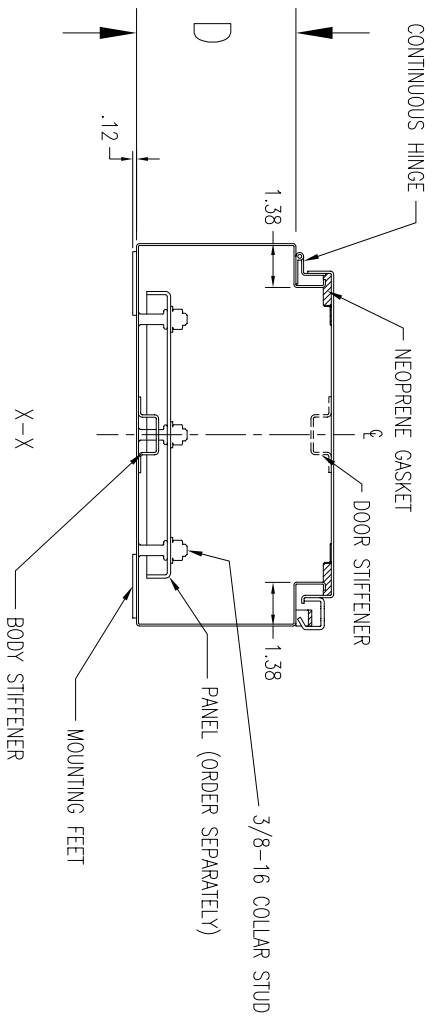
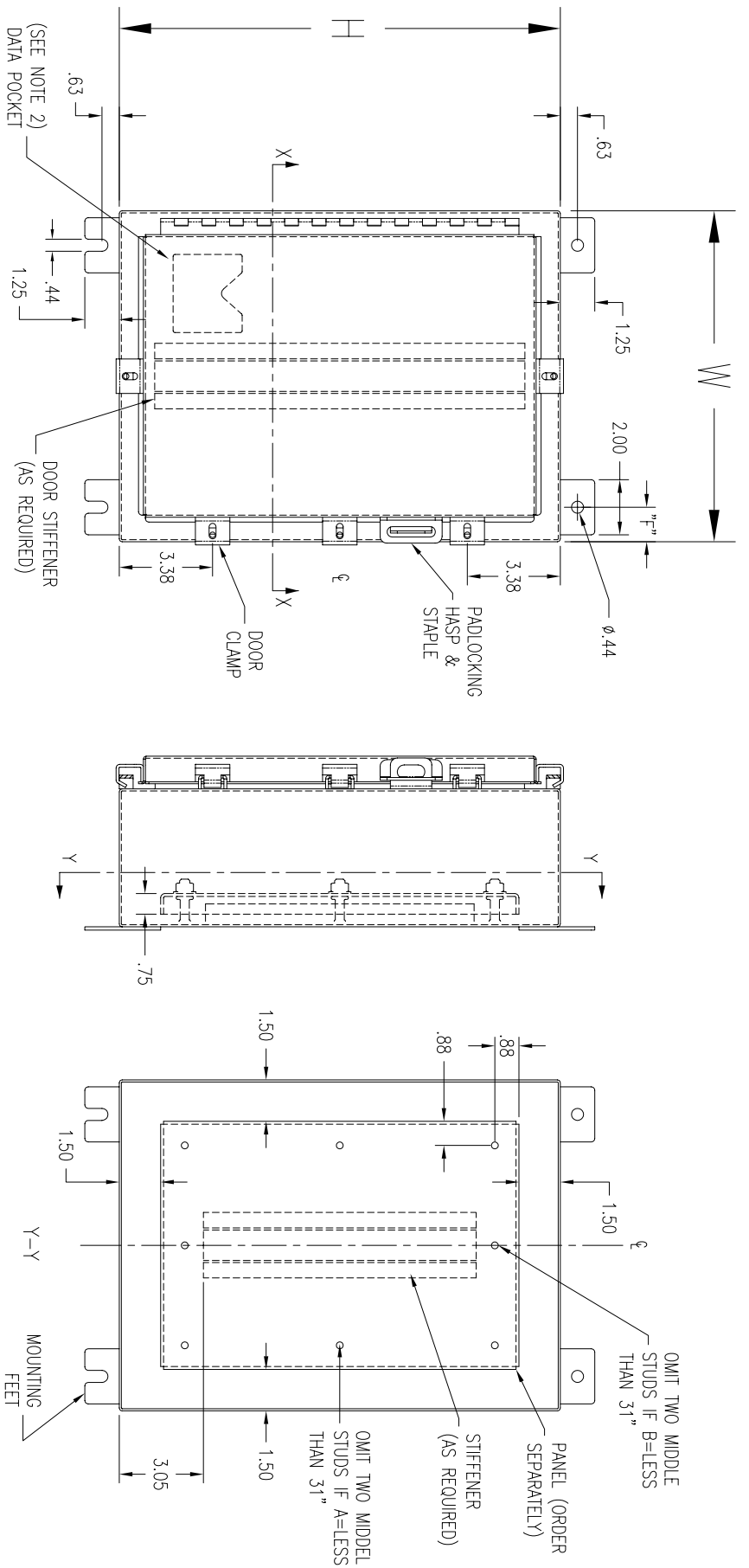
METAL CABINET AND FIXTURE COMPANY

a Span-O-Matic, Inc. Company

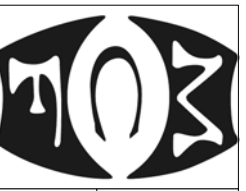
825 COLUMBIA STREET, BREA, CA 92821
 PHONE: 714-256-4700 FAX: 714-256-4401
 WWW.SPANOMATIC.COM
 WWW.METALCAB.COM

MCF-N4X-SD

Type 4X Single Door Enclosure



- NOTES:
1. PANELS ARE 12 GAUGE STEEL.
 2. SMALL DATA POCKET 6.0 X 6.0
LARGE DATA POCKET 9.0 X 9.0



METAL CABINET & FIXTURE CO.
 825 COLUMBIA ST., BREA, CA 92821
 (714) 256-4700

MCF-N4X-SD